

Crich Standard

CRICH | FRITCHLEY | WHATSTANDWELL | BULLBRIDGE

Issue 112 Autumn 2024

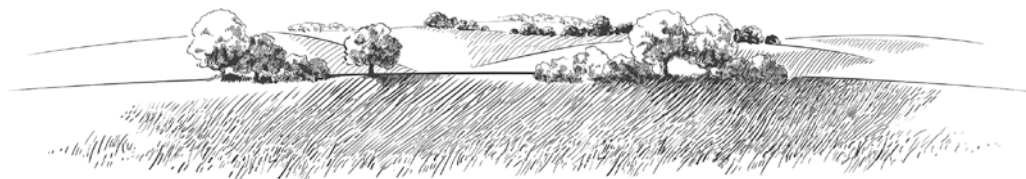


A Community Magazine for the Parish

Crich Standard is a non-profit community magazine, run by volunteers and delivered quarterly to the Crich, Fritchley, Whatstandwell and Bullbridge area.

What's inside

- 3 News in brief
- 8 Scam protection advice
- 10 Crich Luncheon Club visits Lea Green
- 11 Crich wordsearch
- 12 In praise of pigeons
- 14 Eight things your library service offers that you might not know about
- 16 Gardening in winter
- 17 Hilts Quarry update
- 18 Springs, wells and water sources in Crich Parish
- 21 Crich's Creative Agent
- 23 Community diary
- 27 Community round-up
- 36 Schools round-up
- 38 The last word
- 39 Quick quiz
- 40 Local advertisers



Crich Standard

About us

Thanks to all of the volunteers who make up the core team, as well as the wider photographers, contributors, distributors and advertisers. Without their ongoing ideas, skill and hard work Crich Standard wouldn't exist. We continue to build on the original vision of the founding CACN committee.

Contact us

Mail: Crich Standard, Crich Glebe Community Centre, Glebe Field Close, Crich DE4 5EU (thank you to the Glebe).

Editor: editor@crichstandard.org

Distribution:
distribution@crichstandard.org

Publication dates

The magazine is published four times a year. Deadlines for submission are 6 January, April, July and October.

The editorial committee cannot be responsible for the accuracy of information contained in the magazine. The views and opinions expressed are not necessarily shared by the committee.

Crich Standard team

Tony Mills, Stephen Woolley, Karen Davies, Claire Ganthony, Geoff Brown, Linda Philo, Jan Rowland, Julie Woolley, Sally Bestwick, Siobhan Conroy, Louise Maskill, Emma Nicol.

Advertising Rates (for 2025)

Circulation: 2,000 copies

Support your community and advertise to your local customers.

Ad sizes:

1/4 page (H92mm x W60mm)

Single issue £24 2 issues £40
3 issues £55 Full year (4 issues) £68

1/3 page (H60mm x W122mm)

Single issue £30 2 issues £50
3 issues £70 Full year (4 issues) £95

1/2 page (H92mm x W122mm)

Single issue £40 2 issues £70
3 issues £110 Full year (4 issues) £134

Full Page (H210mm x W148mm)

Single issue £60 2 issues £110
3 issues £160 Full year (4 issues) £210

Back Page (H210mm x W148mm)
£Negotiable

Design Prices: 1/4 & 1/3 page £35
1/2 page £50 Full page £90

Advertising deadline: Deadlines for submission are 6 January, April, July and October.

Please send enquiries to:
advertising@crichstandard.org

Andrew's Tractor Run By Geoff Brown

Living in Crich and the surrounding villages, you've got to love a tractor! There's no escaping them.

During the Covid lockdowns in 2020, local farmer Andrew Hitchcock and a small group of pals decided to organise a mystery tour – by tractor!

"Andrew's Tractor Run" was born, and it has now become an annual Christmas event for Andrew, who lives at Causeway Farm, Plaistow Green. This year marks the fifth run, and Andrew hopes it will be the best yet. Last year over 20 tractors and other vehicles took part. While not (yet?) on the scale of the really big, illuminated tractor runs that are becoming popular in many areas, Andrew is keen to encourage more support from local tractor owners and the general public.

The event raises money for local charities. In 2023 the chosen charity was Lauren's Legacy, which supports teenage cancer patients. This year they plan to support Ashgate Hospicecare at Chesterfield, who provide compassionate, specialist palliative and end-of-life care. A Just Giving page will be set up before the event.

The run this year is being held on **Saturday 28 December**, starting and finishing at Causeway Farm. As it is a mystery tour, details of the route are not even known to the drivers until the day! However, Andrew has indicated that they are very likely to come through our villages at some time during the morning. More details of the timings and the donation details will be available on the Crich Standard Facebook page nearer the date.

Anyone with a tractor (or other vintage vehicle) who wishes to join the run is invited to contact Andrew for details. The public can view the procession along the route, or go along to Causeway Farm at the end of the run (from about 12.30pm) to view the tractors and buy tickets for the raffle which will also be held then.

So if you have children or grandchildren who love tractors, or if you just want to see them yourself, you'd be welcome to go along. Refreshments will be available.

Andrew can be contacted on
ahitchcock@gmail.com or 07375 329087.



Photo by Geoff Brown

Consultation on change to Crich Post Office

By Geoff Brown? [taken from FB]

The Post Office is consulting on a proposal to move Crich Post Office from its current location to the nearby Nisa store. This will follow the proposed retirement of Karen and Phil.

The consultation remains open until 6th December.

For more details and to see the consultation, use the link below or scan the QR code.

postofficeviews.co.uk/national-consultation-team/crich-de4-5dd-417207/consultation/intro/



Buses update

Stagecoach Chesterfield took over operation of the Crich bus network on Tuesday 27 August this year and the improvement was immediate, with a full service being put out every day.

Unfortunately, worsening traffic conditions and the constant plague of roadworks has meant that timekeeping was not good enough, so a new timetable started on Monday 28 October.

This timetable allows buses more time to complete their journeys, resulting in improved timekeeping. For the most part the changes simply involved retiming journeys, but route 140 now follows a simpler route through Lea and Holloway. Buses on routes 140 and 142 to Alfreton all terminate at the bus station instead of some continuing to the railway station. The loss of this link is a shame, but something had to give in order to protect the rest of the route network. Most journeys on route 141 start and finish at Ripley Market Place instead of continuing to Sainsbury's.

Stagecoach really do want this to work at senior management level, and they have a regular team of drivers who volunteered to work these routes; they too are fully committed to their success.

Derbyshire County Council continues to fund these routes and oversee their operation. We need to make more use of the buses so that Derbyshire continue to fund them.



Crich Cinema Club

By Roger Bode

I'm delighted to welcome you to the Crich Cinema Club!

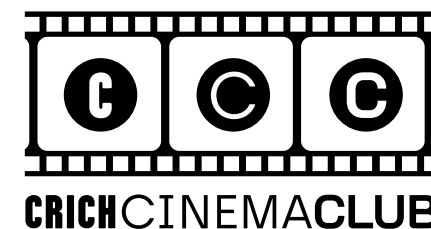
If you've been following our progress, you'll know that our launch went ahead in October and early November.

If you haven't, or if you're finding out about CCC for the first time, this column will bring you up to speed with all you need to know.

Films will be shown at Crich Glebe Community Centre on a regular basis, usually once a month on Friday evenings from September to May. Additional screenings are likely as we find our feet and develop our programme.

Friday evening films will commence at 7.00pm with our doors open from 6.00pm, so you can come to the Cinema Café, catch up with friends and enjoy some refreshments and snacks before the film.

The cinema has 50 seats with brand new equipment installed in the Derwent Room, and there are three choices of seating/ prices. All tickets will be sold online via Ticketsource, from where you will be able to choose your seats. Wheelchair spaces are available. Tickets will usually be released two weeks prior to each screening, and there is no membership scheme so everyone has an equal opportunity to see the films they want.



If this has excited you, please sign up to receive regular information or follow us by using one or more of the methods below:

- 1) The Crich Glebe Community Centre newsletter – sign up at: crichglebe.org/news/newsletter-signup
Click on the link and select the option for Crich Cinema Club to receive direct mailings about our upcoming shows.
- 2) Information will also be posted on the Glebe's 'What's On' page: crichglebe.org/whats-on/crich-cinema-club
- 3) Find us on Facebook:
facebook.com/crichcinemaclub
- 4) We're also on Instagram:
instagram.com/crich.cinemaclub
- 5) Check out local posters

Our next two films are family Christmas films:

The Polar Express (cert PG) – Saturday 14 December 2.00pm (doors open 1.00pm)
Tickets on sale on 16 November

The Man Who Invented Christmas (cert PG) – Friday 20 December 7.00pm (doors open 6.00pm)
Tickets on sale 6 December

We do hope you'll come along and support your new local cinema!

Welcome to Jo Honour, new vicar for Crich and South Wingfield

By Geoff Brown



Wednesday 2 October saw the licencing of Jo Honour, who has moved to the village as the new part-time priest in charge of St Mary's, Crich and All Saints, South Wingfield.

Jo and her husband Derek have moved to Crich from Derby, where Derek was also a vicar for fifteen years prior to his recent retirement. Before this they were quite nomadic, living in different parts of the country including Bath, Nottingham, Hayes, Guildford and Sheffield!

Jo originally trained as a teacher of humanities, but only taught for three years. She met Derek while living in Bath, and they both then trained in theology

at St John's College, Nottingham and became full-time clergy. They married in 1986 and have two adopted children and four grandchildren. Jo joined the prison service, and worked as a chaplain at Sudbury Prison before moving to Crich.

Jo and Derek have been city dwellers throughout their adult lives, but since living in Sheffield they have always been drawn to Derbyshire and the Peak District. They love the outdoor life that it offers – and the beer, in Derek's case!

For some years they had a cottage in Youlgreave, which they used as a holiday let. They now have a property in Bolehill near Wirksworth, in which they are indulging their passion for all things ecological – heat pumps, solar panels, modern insulation and so on.

Living in rural Crich is already providing a welcome lifestyle change. Compared to the city, people notice what they're up to (including investigating the contents of their neighbour's bins to see which collection it was in their first week). And people stop to talk!

They value the local facilities, including the medical practice, the Glebe, the local shops, pubs and restaurants, all within walking distance of the vicarage on Coasthill. But they are having to adjust to driving rather than walking to a big supermarket – a novel concept!

Importantly, the area is ideal for them to pursue their many hobbies. For Jo, this means gardening, walking, swimming,

reading, nature and the environment and no doubt much more. Derek is also a keen walker, runner and cyclist, and is "enjoying" the challenge of the local hills. The reward is found in his love of real ales! While they were in Derby their son encouraged them to keep chickens, and these have also made the move to Crich and are happily installed in the vicarage garden.

As Jo's post is only part-time, she has her work cut out to look after two churches. At least for now she plans to work full days on Tuesdays and Wednesdays, part-days on Mondays and Saturdays (and Sundays of course), and have Thursday and Friday off.

On her days off she may well be 'out of area' visiting her elderly father, but she is always contactable by email at vicarjocsw@gmail.com. Her mobile number for more urgent issues is 07902 111253.



Crich Quarry planning update

By Tony Mills

Crich Quarry planning application refused by County Council

At a meeting of the Planning Committee on Monday 30 September, members voted unanimously to REFUSE the application to build a holiday resort in Crich Quarry.

Over 700 residents objected to the proposal, many as part of the ROAR (Residents Opposed to Amber Rock) campaign group. Formal objections from Historic England, Derbyshire Wildlife Trust and the Mercian Regiment were all discussed, while a number of members of the local community also addressed the meeting.

First launched via a postcard and website in March 2021 with an outline planning application lodged in 2022, this may not be the end of the attempt by the applicant to bring a large-scale holiday resort to the quarry. It is expected that an appeal will be lodged within the next six months, which ROAR remains committed to resisting.

The local group will continue to keep the community informed, and will offer a pragmatic, sincere and fact-based response to any further developments.

Photos by Geoff Brown

Crich Parish Council update

The Recreation Ground

The Recreation Ground sits at the heart of Crich Parish, both literally, being close to the centre of the village, and practically since it is used by all. Young children use the play equipment, older children play football, and people walk their pets or just take time to sit and relax. It's also an ideal place for events such as the Crich Fête.

After investment to upgrade the play equipment a few years ago, supported by The PLACE Project and a number of co-funders, the Parish Council has continued to maintain the Recreation Ground. Some of the ongoing upkeep is due to wear and tear; if you've been there recently you'll have seen that we have re-seeded the goalmouth areas. In addition, a Community Orchard has been planted and a bee post has been installed.

Unfortunately there is also occasional vandalism. We have had reports of dogs being allowed to dig holes in the grass, which then become a risk to walkers, and there has been damage to the toy train roof which we have had to replace. Fortunately, however, most of the people who use the Recreation Ground realise how important it is to take care of it.

There's always scope to do more, and the Parish Council is keen to hear from anyone in the Parish with ideas as to how we can enhance the area even further. With help and care from everyone, we hope that the Recreation Ground will continue to improve and be a resource for everyone in the Parish.

Scam protection advice

By Ripley Police HQ

Scams are becoming more and more convincing, and criminals will do whatever it takes to steal your money or personal details. Criminals use powerful psychological techniques to scam people of all types, regardless of age, gender, education or economic background.

Scams succeed because they look or sound like the real thing and catch you unaware. Criminals take advantage of advances in technology, new products, and even major events like the cost of living crisis to create feasible stories that will convince you to give them your money and/or personal details.

Criminals are experts at impersonating people, organisations and the police, and at using befriending and grooming techniques to lure their victims. They spend hours researching you, hoping you'll let your guard down for just a moment. They start by appearing legitimate, helpful, friendly, even charming, but quickly move to being persuasive, persistent, threatening, aggressive and intimidating.

How to protect yourself

Be alert to the fact that scams exist. Be wary of uninvited contact from people or businesses over the phone, email, post, or social networking sites. Are they who they say they are? Remember, if it looks too good to be true, it probably is.

Beware of requests for money or personal details. Never send or transfer money to

a safe account after receiving a cold call. Never give your credit card details, bank account details, online account details or copies of personal documents to anyone you don't know or trust. Only criminals will try to rush or panic you.

Know who you are dealing with. Authorities like the Department for Work and Pensions and His Majesty's Revenue and Customs (HMRC) will never ask for banking details like your password or PIN, either over the phone or in person. Police or banking representatives will never ask you to help in an investigation.

Be wary of unusual payment requests. Scammers will often ask you to use unusual payment methods, including gift cards (Steam, Amazon, iTunes) or virtual currency such as Bitcoin.

Pick strong passwords. Choose three random words with a mixture of upper/lower case, numbers and special characters. Do not use the same password across sites. Enable two-factor authentication (2FA) on your accounts and devices that offer it; this provides a second layer of security.

Be wary of phishing scams. Don't click on any links or attachments in unexpected emails.

Social media. Make sure all your accounts are set up correctly, and review your privacy settings to ensure your profile is appropriately locked down.

If a call or mail has left you concerned or panicked, contact a family member or friend to discuss your concerns. **Never act on impulse.**

Report suspicious texts by forwarding them to **7726**, which spells SPAM on your keypad.

Scam protection – how to report it

If you think you've received a phishing email, forward it to report@phishing.gov.uk

If you think you've fallen victim to a scam, contact your bank immediately using the number on the back of your card or an independently verified number, and report it to Action Fraud by visiting www.actionfraud.police.uk or calling 0300 123 2040.

If you, or someone you know, receives contact of this nature, contact Derbyshire Police via:

- Phone: dial 101
- Facebook: send a private message to /DerbyshireConstabulary
- Twitter: direct message our contact centre at @DerPolContact
- Website: complete our online contact form at derbyshire.police.uk/Contact-Us

If you are deaf or hard of hearing you can also text 07800 002414 or email us at deafsms@derbyshire.pnn.police.uk.

You can also call Crimestoppers anonymously on 0800 555 111.

Crich Luncheon Club visits Lea Green

By Cathy Bowness

It's hard to believe that the village Luncheon Club has been going for over forty years and is still very much thriving today. It currently has over thirty regularly attending members and is run by a team of sixteen volunteers. The Club meets every Wednesday in the year except for two in December and one at Easter.

Each week brings something new in the way of delicious meals cooked by Maxine, and we lay on a variety of entertainment ranging from choirs to quizzes with lots in between. We also go on an annual summer outing; this year's was a 'pearler'!

Cast your minds back to July 2022 – not a good time for anyone, but the Luncheon Club had just booked to visit the Lea Green Outdoor Centre. Yes, we were planning to tackle the daring Skyline, among other activities such as archery and boules! Then the inevitable happened and Covid struck, which meant we had to cancel our visit.

However, fast-forward to July 2024, when we were finally able to go. Twenty-seven members and ten volunteers made their way to Lea on one of the sunniest days of the summer!

We were welcomed by Vicky Green, the Centre Manager, who briefed us on what everybody would be doing. Some would be tackling Skyline, a challenging 15-foot-high rope obstacle course with a zip wire. Others would be practicing their archery skills, all supervised by experienced and friendly tutors, while some of us sat sedately in the shade and watched games of boules.

What a day! After a lot of activity, everyone enjoyed a lovely lunch and there was lots of chatter and laughter! Well done to everyone who went for being brave, being supportive to each other, and most of all enjoying yourselves!

Thank you also to Lea Green staff for being so accommodating and friendly. You and the lovely hall and grounds made it possible for a community group like ours to have a wonderful time!

We look forward to returning for a second dose of adrenaline; the photographs speak for themselves!

If you would like to become a volunteer or join as a member of our Club, please get in touch with the Glebe: 01773 857894



Crich wordsearch puzzle

By Tom Scutt

There are 15 Crich-related words hidden in this grid. Unlike a normal wordsearch, the words aren't in a straight line – instead you can move up, down, left, right or diagonally from each letter to the next. Each letter is only used once. The first word has been found for you, to get you going!

M	O	L	E	Y	T	R	L	L	B
Y	M	N	H	M	A	U	D	I	R
R	E	U	C	W	A	B	G	H	A
R	N	T	T	I	Y	E	W	S	T
A	Q	S	C	R	R	A	T	C	A
U	O	R	L	I	F	N	L	R	D
T	E	E	I	H	C	D	L	A	L
S	T	B	U	J	W	E	O	C	E
B	L	A	N	D	A	N	M	F	L
E	E	G	R	R	C	O	M	A	O

The answers are on page 31.

In praise of pigeons

By Essie Prosser

What do Tony Mather, the late Queen Elizabeth II, Mike Tyson, Martha Stewart, Pablo Picasso and Charles Darwin have in common? Congratulations if you said they were all pigeon fanciers. Granted, their lofts may have differed in size and opulence from the ones I remember from childhood, which were often recycled railway carriages or home-made sheds painted in rainbow colours, but nevertheless they all keep (or kept) various Columbidae. Pablo Picasso even celebrated the pigeon by naming his daughter Paloma.

The pigeon used to be called “the poor man’s racehorse” with pigeon racing being a very popular hobby in the early to mid-20th century, particularly among miners in the north of England. You may remember Friday nights at the Swan a few years ago when we saw the arrival of fanciers from far and wide (well, Belper and Heage), gathering in the yard with their baskets to await the arrival of a tarpaulin-clad lorry which would whisk its precious cargo away to Devon, France or Scotland. The birds would then be released, and anxious owners would await their homers’ return to the loft. The race winners were determined by tags attached to the birds that calculate speed rather than distance, since birds travel varying distances back to their lofts. Prizes were won and reputations made!

Tony Mather is the only person left in Crich who still races pigeons. He has a loft of 150, and admits to shedding a tear when he watched one of his birds recently flying up the valley on its way back from

Barcelona. Tony has been involved in pigeon racing since he was 10 years old, and although, when pushed, he will admit that the two hours a day he devotes to caring for his feathered friends can be a bit of a chore, he is still captivated enough to maintain his loft. Winter is the closed season for pigeon racing, but the work of defeathering (when the pigeons shed their old feathers before growing new ones) and choosing which birds to breed from goes on.

The joy of pigeon racing is beautifully described in a song by Dave Sudbury about a Derby man, Charlie Hudson, whose pigeon, the King of Rome, set a new record in 1913. The song describes why Charlie flew his birds:

*I can't fly, but me pigeons can,
And when I set them free,
It's just like part of me
Gets lifted up on shining wings.*

Charlie’s record-breaking bird flew a distance of 1,001 miles from Rome back to Derby, through a massive storm in which many birds were lost. This makes the King of Rome’s achievement all the more impressive. He is now permanently housed in a glass case in Derby Museum.

Racing is only one aspect of pigeon fancying, although it’s not universally

The pigeon used to be called “the poor man’s racehorse”

approved of; our new King did not take up his mother’s presidency of the Royal Pigeon Racing Association, even though Sandringham House is still home to the Royal Pigeon Loft. According to the popular press, increasing numbers of younger people are opting to keep pigeons as family pets, since they are not only attractive to look at but also highly intelligent. They are one of the few animals that can recognise themselves in mirrors, and they can also show a high degree of facial recognition. They mate for life, and can form real bonds with human beings. They obviously have outstanding memories and are capable of recognising landmarks. It’s thought their ability to return home over hundreds of miles is due to a combination of light, smell and the Earth’s magnetic field.

Of course, they have also been used for thousands of years as message carriers. In WWI a carrier pigeon called Cher Ami was launched by an American battalion that was trapped in Northern France. The bird was their only means of communication from behind enemy lines, and despite being shot at and badly injured Cher Ami enabled the eventual rescue of 194 men. He was awarded the Croix de Guerre

for his efforts. The British Armed Forces also used a pigeon called Commando on several intelligence missions, for which he was awarded the Dickin Medal, the animal equivalent of the Victoria Cross.

More recently, in 2016 the Pigeon Air Patrol campaign group attached backpacks to carrier pigeons to measure air pollution in London, and the London Museum adopted a “pigeon and splat” as part of its new branding in July 2024. The white porcelain pigeon and golden splat were designed by the Uncommon Creative Studio to represent “an impartial and humble observer of London life”.

Often disparagingly referred to as “rats with wings”, pigeons sometimes get a bad press as disease-carrying, crop-eating, mess-making pests. However, it’s difficult to question their longevity as a species co-existing with humanity, since they were domesticated over 3,000 years ago. In fact, perhaps we could all use them as role models of strength, peace, beauty, and devotion. That’s pretty good going for a bird with a brain the size of a walnut! So next time you see one of our iridescent pigeon pals alight on your shed roof, be nice to it and appreciate its existence.





Eight things your library service offers that you might not know about

By Kelly Shrimpton, Belper Library

ebooks, e-audiobooks, emagazines and newspapers

Download ebooks, e-audiobooks, emagazines and newspapers for free on your computer, phone or tablet. We have a range of titles available across Borrowbox, Libby, Ulibrary and PressReader. For set-up instructions and further information on what's available, just visit www.derbyshire.gov.uk/leisure/libraries/ebooks

Mobile library

We have two mobile libraries serving around 150 communities across the county where there is no library building. The mobile libraries visit once every four weeks, stopping at Market Place and Culland View in Crich. Further information is available on our website or by contacting the Library Information Service (details below).

Local and family history research

Find out more about your community and research the history of your house or family. Belper Library has a range of local history books you can borrow, as well as a reference collection which includes the Belper News on microfiche, census returns, maps, and photographs of the local area. These reference collections are available, free of charge, for everybody to use. You can also access AncestryLibrary.com free at any Derbyshire library.

Online catalogue and reserving items

You can renew and reserve your library books using our online catalogue. Search by library, format or subject using our "Advanced Search" and find out what's available to borrow across all Derbyshire libraries. When you reserve items you can also specify which library you would like to collect from.

Home library service

This free service is for anyone who finds it difficult to visit a library or mobile library, or to carry their books home. When you apply, one of our home library service assistants will contact you to discuss your needs, and will typically arrange to visit you once every four weeks with a selection of items tailored to you. We deliver to people in their own home as well as those in care homes.

Events and activities

Belper Library not only offers regular story times and craft activities for children, but we also host a monthly boardgame club suitable for all ages! With a range of classic and modern board games for you to try, our lovely volunteer is also on hand to help get you started.

We also frequently host exhibitions and pop-up displays, providing a space for local artists and groups to display their work.

Contact Belper Library using the details below for further information of regular events, or sign up to the Derbyshire Libraries eNewsletter at derbyshire.gov.uk/leisure/libraries

Computer access, printing and photocopying

Using computers is easy and free in all our libraries. You can book a computer at Belper Library using the details below; we also recommend booking if you wish to use our scanning facilities or the microfiche. All Derbyshire libraries also offer access to a free wifi network, with no password needed to connect.

Printing and photocopying facilities are also available at all Derbyshire libraries. The current cost as of September 2024 is 25p per side for black and white (A4) and 50p per side for colour (A4).

Ask Library

The Library Information Service is an in-depth enquiry service with a team of specialist library staff. It is based at Chesterfield Library and covers the whole of Derbyshire. Our experts can help with all kinds of queries, including research and homework as well as providing more information about any of our services.

To contact the Library Information Service:

Telephone: 01629 533444

Email: ask.library@derbyshire.gov.uk

To contact Belper Library:

Telephone: 01629 533192

Email: belper.library@derbyshire.gov.uk

Derbyshire Libraries are run by Derbyshire County Council.

Find out more about the services we offer at derbyshire.gov.uk/leisure/libraries

See the Community Diary on pages 23-26 for local events and groups

Gardening in winter

By Judy Berry

As we all hunker down to watch Strictly and get our money's worth out of the log burner, there is still some gardening that can be enjoyed.

If you have compost that's ready, you can spread it over any bare soil. This will make room to top the bins or heap up again with debris cleared from the garden. Rake up leaves – but if you can leave the odd sheltered pile, then please do so because it will offer a place for all sorts of wildlife to overwinter.

Talking of wildlife, the birds are now starting to get short of food, so consider starting to feed them, or offering extra if you feed them already. I get great pleasure from watching the birds hopping around the garden – bullying greenfinches, persistent blue tits, territorial robins and flocks of long-tailed tits (my favourites). However, we won't talk about the pigeons and the devastation they caused my sprouts!

Ponds will also benefit from a little attention now, clearing the surface so around half of it remains covered. Remove any dead and dying aquatic plant debris, to stop it sinking and decaying at the bottom. If, like me, you have things creeping in from the margins, such as couch grass, you can tidy these

away as well.

As we are probably going to have another wet winter it may be a good idea

to lift overwintering pots off the ground using purpose-bought feet or bits of stone/brick etc., because soil in pots can get completely waterlogged which can cause roots to rot.

If you can't manage without planting something, herbs can still be raised indoors; I've found basil, cress and coriander will grow quite well on a windowsill. Outdoors, weather permitting, garlic and onions can be set to overwinter. Bare-root fruit bushes can also be planted out, such as gooseberries and blackcurrants.

I found that my raised beds were very depleted by last year's rain, so this year I'm going to make a special effort to get a layer of well-rotted manure over them and top it with compost, in the hope that the nutrients will get taken into the soil by the worms and the goodness will be retained a little better. Don't manure where you are planning on growing parsnips next year, though, because they don't like the soil too rich.

Our gardening club recently had a trip to Meynell Langley garden centre near Ashbourne. This is a good reliable place to buy a poinsettia; they raise thousands every year, and it's worth a trip to see their display.

Crich Gardening Club meets in the Comrades Club on the first Wednesday of the month. Subs are £5 for a year, and you are expected to join the Comrades Club (£7 annually). Coming up we have our Christmas social on Wednesday 4 December, and Jeff Bates is presenting on Wednesday 8 January. Everyone is welcome.



Hilts Quarry update

By Janet Amos

Hilts Quarry, which has had a bit of a chequered history in recent years, is being turned into a thriving nature reserve. Rolls Royce still owns the quarry, and their staff carry out weekly checks to monitor the quality of the water which flows through and out of the site (to date there have been no reasons for concern).

Rolls Royce have already carried out an extensive tree planting programme, choosing mixed, native planting including sycamore, ash, oak, holly, beech and yew. The trees are all thriving, and in the coming years they will provide a good mixed woodland habitat capable of sustaining a wide range of species. The on-site cameras have already spotted

badgers, foxes, rabbits and hares, as well as numerous species of birds. In addition the quarry pond is encouraging the return of invertebrates, which add to the diversity of the natural food chain.

During the next few months Rolls Royce are intending to carry out some investigative work to monitor the stability of the rock face, especially where there are dwellings around the edges of the quarry. Local residents have already been informed of the plans, and there is good liaison between the residents and Rolls Royce's agents. The quarry is currently closed to visitors, although Rolls Royce have not ruled out the possibility of arranging some 'open days' in the future.



Springs, wells and water sources in Crich Parish

By Claire Ganthony

Before 1906 most of the domestic water in Crich Parish came from a variety of springs, wells and pumps. There were also troughs for animals to drink from at various points throughout the parish. While many of these water sources have now been abandoned, removed or covered over, there are still plenty to spot around the area if you know where to look.

The water troughs on Crich Market Place are the most prominent source of water at the centre of our community. There is no record of when the troughs were first constructed, although it is known they were in place by the early 1840s; they are simply listed as "ancient". Before their construction it is thought there were "ponds" on the same site. There were similar troughs on Fritchley Green opposite the Congregational Hall, and smaller ones at Townend on Carr Lane, Top Lane in Whatstandwell and at other locations across the parish.



Trough, Top Lane. Photo: Geoff Brown



Troughs, Crich Market Place. Photo: Geoff Brown



Trough, Town End. Photo: Geoff Brown



Fritchley Green Trough.
Photo: Geoff Dawes Archive



Pump at Dimple Lane.
Photo: Geoff Brown

Some individual households were fortunate enough to have private pumps or wells on their property. For most of the community, though, water needed to be fetched from public pumps and carried to the home. One such source was the "Holy Well" in the fields at the end of Coasthill. The well was used by the local community and as the water source for the church; the footpath across the bridge on Dowie Way links the church to the well, the age of which is unknown but it is listed as "medieval to post medieval". It is marked as a "pump" on both the first (1880) and second (1900) editions of the OS map, and as a "well" on the third edition. It is known to have been still in occasional use for agriculture in the 1980s.



Pump Stone, Crich Carr.
Photo: Geoff Brown

A pump stone remains in place outside Crich Carr School, which would have supplied residents of Whatstandwell. Another water source in Whatstandwell was the fountain at the original Whatstandwell Bridge Railway Station, behind what is now the Family Tree. This was paid for by Frances Hurt in 1860 and built into the retaining wall of the canal. On the edge of the parish at Park Head there is a well situated between two fields named Well Piece and Well Meadow.



Well at Coasthill.
Photo: Geoff Brown



Whatstandwell Fountain. Photo: Geoff Brown



Park Head Well (right).
Photo: Geoff Brown

Crich's Creative Agent – using creativity to change our community

By Clare Limb



I have lived in Crich for over 19 years, moving here when my daughter was a newborn. I was a first-time mum without any friends who lived locally.

All that changed when I went to post-natal classes and Toy Library Stay and Play sessions at the Glebe. These sessions, along with groups such as Popalong, provided a lifeline and enabled me to make local contacts with whom I am still friendly today.

Fast-forward several years, and I started to get more involved in the local community. I was one of the founders of both Art Share and Transition Crich and I'm very passionate about both these initiatives. Art Share champions the everyday creativity of people in our community who make art for themselves, often with the effect of improving their own well-being. The annual Community Art Exhibition shows work from these everyday artists as part of Transition Crich's Share and Repair Café. We also run workshops for people of all abilities, with the resulting artworks forming

the core of the exhibition. Meanwhile, Transition Crich aims to facilitate and promote sustainability and improve green spaces with an emphasis on well-being, creativity and resilience within the local community.

When the chance came up to apply to Make/Shift to be a Neighbourhood Creative Agent in Amber Valley, I thought, this is for me! Make/Shift are part of a national network of organisations funded by Arts Council England to support the development of arts and culture at grassroots level. They were looking for people to go on a Peer Learning Journey to explore and share approaches to co-creating with their local community. This programme is being delivered by Platform 31, an organisation that helps people become changemakers in their local communities.

So, what does this all mean? Well, that's to be decided by you, the community (I have to listen a lot in this role!). In early October Transition Crich and I set up a community consultation (both online and in person) to discover people's creative ideas for how to make Crich a greener place to live, work and play. I will then work with Transition Crich, Make/Shift and Platform 31 to shape your ideas into projects or activities that will take place between now and May 2025.

Ideas so far have included a sustainable clothing event and a monthly make-do and mend session where people can learn new skills in arts, crafts and other areas, using creativity to be more sustainable and improve their well-being at the same time.

It's clear from the conversations I've had so far that people are keen for everyone to ►

Creative agent continued ...

feel included, and for everyone to be able to access the activities that we co-create. While I may not be able to bring everyone’s ideas to reality in this short time, I hope this might be the start of something long-lasting and impactful, establishing the Crich area as a community that uses creativity to care for our people, planet and place. If you have ideas for something you would like to co-create (or if you’d like

to help out), please contact me on clarelimbcreates@outlook.com or come along to one of the Transition Crich topic groups to find out more about our work.

To find out more about what the other Neighbourhood Creative Agents in Amber Valley are doing in their neighbourhoods, go to: www.wearemakeshift.uk/events/creative-agents/

Crich Glebe Community Centre looks forward to welcoming in 2025!

With the hustle and bustle of indoor winter activities in full swing, the Glebe is busy welcoming ever more people in the community and hosting new initiatives, clubs and activities. We can look back and smile at a great 2024, and look forward to 2025 with great excitement!

After months in the planning, we are delighted to have launched Crich Cinema Club. Films will be shown once a month, at 7.00pm on Fridays.

This equipment is a wonderful resource for the whole community and can be hired when hiring the Derwent Room, whether by community groups or for conferences.

Following our successful applications for two small grants, we are looking forward to launching a further two initiatives! The first will enhance our Tuesday lunch club, enabling us to offer transport to those who are isolated from the community due to a lack of transport. The second is a brand-new club – a sensory stay and play group for children with additional needs, learning disabilities, developmental delay and genetic conditions.

We look forward to continuing our work with the WI as plans continue to launch a new group in the new year, and we will be announcing even more clubs, groups, activities and events.

As you begin to plan for the New Year, we thought it was a great opportunity to remind you what’s on offer every week at the Glebe.

From yoga to dancefit, indoor bowls and kurling to table tennis, crafting to heritage, stay and play to children’s dance, Youth Club, Starlight Club and lunch clubs, plus a hairdresser, foot clinic, and lash and brow clinic. And that’s without even mentioning events!

Did you know you can also hire the Glebe for parties, weddings, meetings or conferences?

Follow us on [Facebook.com/crichglebe](https://www.facebook.com/crichglebe) or [Instagram.com/crichglebecommunitycentre](https://www.instagram.com/crichglebecommunitycentre)

Let us know what you want to see at the Glebe in 2025!

Community Diary

Crich Glebe Community Centre

WEEKLY CALENDAR

MONDAY

Derbyshire Toy Libraries Stay & Play	9.30–11.30am
Crich Family Lunch Club	11.00am–1.00pm
Kurling (autumn/winter only)	12.00–2.00pm
Dru Yoga	3.00–4.30pm
Clare’s Yoga	6.30–7.30pm

TUESDAY

Gentle Yoga (fortnightly)	10.00am–12.00pm
Tuesday Club (meal – book in advance)	12.15–1.30pm
Sarah’s Aerobics/Dancefit	6.30–7.30pm
Table Tennis	7.00–9.00pm

WEDNESDAY

Luncheon Club	10.30am–1.00pm
Serenity Yoga	1.30–3.00pm
Starlight Social Club (monthly)	7.00–11.00pm
All About Women (monthly)	7.00–9.00pm

THURSDAY

Children’s Dance Classes	4.45–6.15pm
Youth Club	7.00–9.00pm
Crich Heritage Group (monthly)	7.30–8.30pm
Crich Crafters (monthly)	6.00–8.00pm

FRIDAY

Yoga with Rachel	9.30–11.00am
Men’s Group (monthly)	1.00–3.00pm
Indoor Bowls (September to April)	2.00–4.00pm

Crich Glebe Community Centre

WEEKLY SERVICES

Optometrist and Dispensary
Tuesday 2.00–4.30pm
Thursday 9.00am–1.00pm

Hair Salon
Tuesday, Thursday, Friday all day

Foot Health Clinic Thursday

Contact information: www.crichglebe.org
Email: office@crichglebe.org
Tel: 01773 857894

Reception is open Monday to Thursday 9.00am–5.00pm.

Fritchley Diary Dates

Motown and Northern Soul Special	
Saturday 16 November	7.30pm
Fritchley Quiz	
Saturday 23 November	7.30pm
An evening of mediumship	
Friday 29 November	7.00pm
Christmas on the Green	
Saturday 7 December	

Crich Glebe Community Centre

THE FINAL FRONTIER

Join the crew of the Starship Glebe Enterprise as they battle against their arch enemies, the Evil Clingfilms led by Killer Queen! (Thank goodness it's so easy to see through their plans!)

Based on characters from Star Trek, come along and meet Captain Birk (*Kirk*), Mr Plock (*Spock*), Spotty (*Scotty*) and Dr Groan (*Dr McCoy, or Bones*) in this space pantomime where anything could happen!

With live music, full sound, lighting and special effects, fun and romance, you'll be transported to a galaxy quite close to Crich where good will (hopefully) triumph over evil. Be prepared to sing along to over 25 hit songs from the 50s, 60s and 70s, including classics such as Locomotion, Crocodile Rock, Waterloo, Time Warp, Great Balls of Fire and Pretty Woman. Suitable for all ages, you'll definitely have a fun night out!

Performances at the Crich Glebe Community Centre:

Friday 6 December, 7.30pm

Saturday 7 December, 6.30pm

Tickets (cash only) from the Glebe, Monday–Thursday 9.00am – 5.00pm

or from www.ticketsource/jkb-productions



Crich Wesley Chapel

REGULAR CALENDAR

POPALONG

Fridays in termtime 9.30–11.30am

Contact Lynda Gray: 01773 857921

MUDDLEALONG

Second and fourth Wednesdays of each month, 2.00–4.00pm

Contact Margaret Scott: 01773 852618

Whatstandwell Social Club

Contact: whatstandwellsocialclub@googlemail.com

Share & Repair Café

Winter Share & Repair, which will be a special Plastic-Free Christmas event.

Saturday 23 November, 9.30am–1.30pm

Venue: The Glebe

Music & Live Performance

CRICH LIVE

For upcoming events see page 30 and online: www.crichlive.org/events/

Parish Council – Upcoming meetings

Monday 2 December, 7.30pm

Monday 6 January, 7.30pm

Monday 3 February, 7.30pm

Venue: Crich Glebe Community Centre

Community Groups and Clubs

GARDENING CLUB

Venue: Comrades Club

Contact: If you'd like to come along please contact Robert Brierton: 07979 714360

CRICH RECORD CLUB

Third Tuesday of each month at 7.30pm

Venue: The Old Black Swan

Contact: Simon Philo: simonjphilo@icloud.com

BEAVERS for 6–8 year olds

Mondays, 5.45–7.00pm (termtime)

Venue: Scout Hut, Jeffries Lane

Contact: Crichbeaverleader@gmail.com

CUBS for 8–10.5 year olds

Tuesdays, 6.30–8.00pm (termtime)

Venue: Scout Hut, Jeffries Lane

Contact: williamcaine@btinternet.com

SCOUTS for 10.5–14 year olds

Wednesdays, 7.00–8.30pm (termtime)

Venue: Crich Scout Hut

Contact: debbiecaine@btinternet.com

Weekly Quizzes

The Old Black Swan – Sundays, 7.00pm

Comrades Club – see the ad on page 54

Fritchley Village Hall

REGULAR CALENDAR

Fritchley OAP Group – first Tuesday afternoon of each month

Community Groups and Clubs

TRANSITION CRICH

Meet on second Tuesday of the month at 7.30pm

Venue: Comrades Club

Contact: transitioncrich@gmail.com

Transition Crich also has a **Green Spaces and Wellbeing sub-group**, meeting every two months on the third Wednesday of the month at 8.00pm. Next date: Wednesday 15 January

Venue: The Old Black Swan

Contact: transitioncrich@gmail.com

Community Gardening and Litter Picking – every two months on the first Saturday of the month, 10.00am–12.00pm.

Next date: 7th December

Venue: Meet outside the Glebe

Contact: Janet: transitioncrich@gmail.com

Energy and Waste Group, meeting on the fourth Wednesday of each month at 7.30pm

Venue: The Old Black Swan

Contact: transitioncrich@gmail.com

Miscellaneous

WOMEN'S INSTITUTE

First Tuesday of the month, 7.15pm

Venue: South Wingfield Parish Rooms

Sports Diary

Cliff Inn Cricket Team

Contact: rogerbode64@gmail.com

Community Diary

Church Services

ST MARY'S CHURCH, CRICH

First Sunday of the Month – 10.00am
– All Age Worship

Second Sunday – 10.00am
– Holy Communion

Third Sunday – 10.00am – Morning Worship

Fourth Sunday – 10.00am – Holy Communion

Find out more:

<https://www.achurchnearyou.com/church/13152/>

Email: cswsecretary2@gmail.com
or call 01773 852158

FRITCHLEY CONGREGATIONAL CHURCH

Find out more: Facebook @FritchleyChurch

Email: FritchleyChurch@mail.com

CRICH BAPTIST CHURCH

Sunday worship – 10.45am and 6.00pm

Prayer meeting – Tuesdays, 7.30pm

Infant Seekers Club – Thursdays, 5.00pm

Junior Seekers Club – Thursdays, 6.00pm

(Groups meet during termtime)

Find out more:

<https://www.crichbaptist.org/>

CRICH WESLEY CHAPEL

Book of Common Prayer Holy Communion
– Sundays, 8.00am

Sunday Afternoon Worship – 3.00pm

Family Café Church – third Sunday of the month, 9.30–11.00am

Healing Prayer – third Tuesday of the month, 2.00pm

Christmas Dates

ST MARY'S CHURCH, CRICH

Christingle
Sunday 1 December, 4.00pm

Carols round the tree, Crich Market Place
Thursday 19 December, 7.00pm

Carol service
Sunday 22 December, 6.30pm

Crib service
Tuesday 24 December, 4.00pm

WHATSTANDWELL CHRISTMAS TREE LIGHTS SWITCH ON

Saturday 7 December, 4.00pm on The Green

If you would like your group's events or meetings to be featured here, please contact Crich Standard, editor@crichstandard.org

Please check with groups directly if you would like to attend any of these events or meetings, to check dates and times. Crich Standard cannot guarantee the accuracy of these listings, which may be subject to alteration after publication.

HUp Race Report

The annual Whatstandwell Social Club uphill time trial – “Hindersitched Up” – took place as planned on Saturday 21 September. After a dry and pleasant day the late afternoon began to look a lot more menacing, with dark threatening skies punctuated by thunder and spectacular lightning to the south. For a while it looked as if the race was going to be a wet one!

In the event, though, the worst of the storm passed us by, and only when the running was all over did the rain really set in. So with Goldilocks (“just right”) conditions for an uphill running event, 26 entrants hauled themselves up the gruelling ascent from the Family Tree at the bottom of Whatstandwell village to finish at the Cliff Inn. By 6.00pm, just as the rain started to really come down, all had finished and were safely ensconced in the pub for the dishing out of the trophies.

The previous course record of 8m 02s, which, if I'm not mistaken, has stood since 2019, was smashed this year by local runner David Green, who managed to shave off a remarkable 15 seconds to race home in a new course record of 7m 47s. That's certainly thrown down the gauntlet for next year's event! Of the 26 entrants, 12 returned sub-12 minute times, and 4 were sub-10 minutes. And when you consider the range of ages of the entrants, some of the times must be considered even more commendable.

Thanks and congratulations to all who took part – and huge thanks also to our helpers and marshals for making sure everything ran (!) smoothly and safely.

Whatstandwell Christmas Tree Lights

The Whatstandwell Christmas Tree lights will be ceremonially switched on this year on Saturday 7 December, with a social gathering on the Green. For those who are not familiar with the location, it is part-way down Hindersitch Lane, opposite the junction with the road known as The Green.

The Social Club plans to have refreshments available (mulled wine and mince pies). As in previous years we will be asking the choir to entertain or lead us with a few seasonal melodies. This has previously been a lovely social occasion for a meet-up and chat with other locals, as well as a good opportunity to give the vocal chords a bit of a workout!

We'll gather at 4.00pm with the lights turned on soon after that. The choir will sing at around 5.00pm, with the event winding up at around 6.00pm. If you'd like to bring a decoration for the tree, there's plenty of room and it would be most welcome.

The Whatstandwell Social Club event dates for 2025 have not yet been finalised, but for those Whatstandwellians of a public spirited nature who like to see their village looking nice and tidy, we will likely be organising a one-to-two-hour litter pick early next year. Equipment will be provided, and we'll post details on our village notice boards, social media, and our website. All help will be appreciated!

An update from Transition Crich

By Joseph Walters, Co-Chair

We continue to work closely with Derbyshire Wildlife Trust and Derbyshire County Council on developing a Neighbourhood Nature Plan and a Local Nature Recovery Strategy. To support this, we are investigating how the Crich quarries are being used to ensure they remain preserved and protected areas for nature and wildlife.

Our final Share and Repair Café of 2024 will be on Saturday 23 November, and we hope for another great success and was another great success on the theme of a plastic-free Christmas. We have now been running Repair Cafés since March 2023, and have repaired over 250 items. We are collating all the data on the items we have repaired since we began and will be featuring the results at future Cafés.

Our website www.transitioncrich.co.uk is being updated to make it more informative and accessible. We have also started a monthly email newsletter which includes information about upcoming Transition Crich events, local sustainability news and community calls to action. If you are interested in signing up for the newsletter, you can do so on our website or by emailing us at transitioncrich@gmail.com.

In 2025 we will again hold four Share and Repair Cafés at the Glebe and continue our regular litter picks and community gardening activities. Please keep an eye out for posters, social media posts, and updates on our website and in Crich Standard for dates and further details.

Our 2025 Repair Cafés will feature:

- General repairs and sharpening
- Café with hot drinks, homemade savouries and sweet treats
- Seed bank and clothes swap
- Advice on repairing your own items, home energy and general sustainability tips
- Guest stalls for local sustainability organisations and guest speakers
- Recycling station using Hidden Potential Recycling CIC's Blue Bag scheme. Please bring your medicine blister packs, batteries, washed and flattened Tetra Paks and more
- Children's activities

Next year we are also intending to hold a series of Community Energy Visioning workshops in partnership with CPRE Derbyshire. We want to explore ways to generate local renewable electricity in Crich, and these workshops will discuss the needs and interests of the local community when it comes to local energy generation. They will also help us to say "no" to big energy companies who are seeking to develop their schemes in our area in ways we don't want.

We would love to grow our amazing team of volunteers in our key areas of energy, waste, green spaces and well-being, so that we can make Crich an even more sustainable place to live, work and visit. If you are interested in joining us and have ideas to share, please get in touch: transitioncrich@gmail.com

We look forward to a positive, productive and sustainable 2025.

The Starlight Club needs a new treasurer

By Toni Shepherd

The Starlight Social Club (running since May 2023) is a club for adults with additional needs, providing a 'proper night out' with a disco and a bar. Local towns do offer this, but with our lack of evening public transport they can't be accessed easily from Crich and the surrounding villages.

Toni Shepherd has been our treasurer from the get-go. She says she's unsure how she heard about the plan to set up the group, let alone how she became the treasurer! Her original offer was to put in some applications to help the club with start-up costs, since she had previous experience of making grant applications through Foundation Derbyshire (to whom we continue to be grateful for their help and support).

Toni says: "It has been an absolute pleasure and a privilege to be involved in setting up and running the group." She has been a very valued member of the team, but sadly (for the rest of us) she has decided that she needs to step down from the role for personal reasons, although she says, "I couldn't leave the club completely as it takes up a large part of my heart, and I'm honoured to have made new friends among the committee, volunteers and our fabulous members."

So, is anyone up for being our new treasurer? It is not as daunting as it may seem – honest! It includes: banking any monies that come into the club (from social nights, donations and fundraising

efforts) once a month; keeping a simple spreadsheet of monies coming in and out to report to the committee when we meet; paying invoices for the Glebe, the disco, bar licenses etc.; and preparing a simple report for the AGM. The role can be kept simple, and doesn't have to take much of your time. It would be wonderful if we could recruit a local volunteer to take up this role in the near future – we guarantee you would meet some lovely people.

If you are interested in the role, please contact Tony Hubbard (07779 431845) or Gwen Roe (07388 927742). Toni would be happy to meet with anyone interested to discuss it further.



Toni with two of her wonderful family members, Reece and Jay, who love going to Starlight Club

CRICHLIVE

Give Local a Go!

By Roger Bode, Promoter, Crich Live

When this issue of CS lands on your doormat our Crich Live programme will be well under way, with three shows already in the bag! Hopefully you will have been able to come along to a show this season, or in the past. If not, maybe you've chatted to someone who's been along to previous shows.

There are many benefits to our local shows. We're easy to get to on foot, or certainly with only a short journey. We offer a venue where you can come on your own or with loved ones, friends and family.

When you get here you'll always be in for a treat, with top-quality live entertainment at a competitive price and easy online booking. You'll receive a warm welcome from our team, and with a friendly local audience providing a great atmosphere, not to mention a bar, raffle and refreshments, what's not to like?

So if you've never been to one of our shows before, why not come along and see for yourself? We restart in January, with the full line-up as follows:

Saturday 18 January 2025
True Crime Investigators UK

John and Sally Midgley return with another case from the archive. The Pottery Cottage Murders features images and recordings from the time of the crime in the 1970s. If you saw their previous show you won't want to miss this!

Saturday 22 February 2025
Calypso Moon

This all-female swing band plays fresh, playful, infectious and lively well-known classics from the 1920s, 1930s and 1940s. Think Ella Fitzgerald, Billie Holiday and Doris Day!

Saturday 22 March 2025
Craig Gould and the Noble Thieves: The Campfire Sessions

Craig Gould's celebrated talent has received comparisons with songwriting royalty such as Cat Stevens, Leonard Cohen, Bob Dylan and Fleetwood Mac. Craig is happy to present to you his hugely successful Campfire Sessions show.

Saturday 26 April 2025
Paul O'Donnell: We've Got Each Other

A one-person masterclass in comedy, musicals and theatre. This is a wonderfully entertaining show from one of the most innovative theatre makers in the Midlands. For lovers of a great juke box, especially Bon Jovi!

All at 7.30pm at the Crich Glebe Community Centre (doors open at 7.00pm).

For full details of all our shows and to sign up to our mailing list, please visit our website at www.crichlive.org

Tickets only available at www.ticketsource.co.uk/crichlive

We look forward to seeing new and old faces at our shows soon!

Crich Youth Club

By Deirdre Offord

In the last edition some of our trustees gave us their thoughts about why they became involved. Below are two more; we hope you find their reflections interesting, and you might be moved to join us!

DEIRDRE, FOUNDER MEMBER AND MONTHLY VOLUNTEER

As a committee member, my role includes helping ensure our policies and procedures are in place and reviewed regularly, decision making about how our funds are spent, and how we access ongoing funding.

Being part of a team with such capable, stimulating and fun people means I feel I have something to give back to this fabulous community, especially those in the 11-to-16 age bracket. When I am at the club I love seeing our members bouncing in, greeting each other and getting stuck into different games and activities, or the older members gathering together in the conservatory, relaxed, chatting and at ease.

It's a privilege to have this opportunity. I am conscious that sometimes young people get a bad press, but what's not so often seen is their appreciation and thanks when their needs are recognised.

KAREN, TREASURER

I got involved when the club was undergoing the process of becoming a registered charity, which is an area where I have experience since working on



community-building arts-funded projects is part of my job.

I'm also the mother of two teenagers, one of whom had a difficult lockdown and struggled with the repercussions of the pandemic and returning to normal school life. I felt it was very important to get involved with a local group that actively makes a difference for the young people in our village and surrounding communities.

The club provides a safe, welcoming and fun space each week that has nothing to do with school. The committee is a wonderful team, bringing our individual life experiences and skills alongside trained youth workers and our amazing volunteers, who help to keep the doors open week after week.

We would love to hear from you if you would like to volunteer, or if you have an idea about how we could work together to support the parish's young people.

Wordsearch Answers

Crich	Loaf
Monument	Common
Quarry	Tors
Fritchley	Jubilee
Tramway	Stand
Bullbridge	Glebe
Whatstandwell	Carr
Cardale	

Revolutionising access to medical care: Your guide to the new normal

By Crich Medical Practice and Crich Area Patients' Group

Since the onset of Covid-19, our approach to accessing and providing medical help has transformed dramatically. Our practice is now part of a larger network called ARCH, which includes nine local practices across Alfreton, Ripley, Crich and Heanor. This Primary Care Network collaboration allows us to offer a wider array of specialised services to better meet your needs.

Here's what you can expect:

- **GPA Mental Health Assistant:** This professional provides support for mental health issues to help you navigate challenging times. GPA MH Assistants can also conduct dementia reviews.
- **First Contact Physio:** FCPs have extensive experience in the assessment and management of musculoskeletal conditions such as back or neck pain, and can see patients without the need for a GP appointment.
- **Pharmacist:** Our pharmacist is authorised to change prescriptions and conduct medical reviews, ensuring that your medications are appropriate and effective for your health conditions.
- **Social Prescriber:** This role focuses on addressing non-medical needs. For instance, if you're struggling with housing or financial issues, the social prescriber can connect you with local support organisations to develop a care plan.

- **Youth Social Prescriber:** This helps address the unique challenges faced by younger peoples, linking them to resources that promote their well-being.
- **Home Visiting Service:** For patients unable to travel or who are receiving end-of-life care, this service ensures compassionate medical support in the comfort of your home.

In addition, we have introduced an extended hours service through Church Farm Primary Care Centre, Ripley which offers GP appointments, women's health, ear syringing etc.

Patients will also notice some changes in our capacity to handle routine procedures like blood tests. You may be referred to external services such as those at Ripley and Babington Hospitals, which can be accessed via [Swiftqueue.com](https://www.swiftqueue.com).

When you call the practice with a health-related issue, our receptionists are trained to assess your needs. They will ask about your symptoms and direct you to the most suitable specialist, without requiring an initial appointment with a doctor. This streamlined process means you receive specialised care more quickly, allowing our doctors to focus on more complex medical issues.

This new approach ultimately enhances the quality of care you receive, ensuring you get the right help at the right time. Your health and well-being remain our top priority as we adapt to these changes together.

Crich Village Fête South Wingfield WI

By Geoff Brown

So, this year saw us organising and staging:

- A great Crich Village Fête in July. Our apologies for running out of beer – but you did drink more before 4.00pm than in the whole afternoon two years ago, when it was really hot! The finale was provided by Ollie Taylor-Fry and his band Facsimile and the spectacular hot air balloon launch, complete with two lucky raffle winners. Perhaps a tradition is being established!
- A fabulous family barn dance, in a tent, in September, in very wet weather! But it worked.
- A brilliant bonfire and fireworks display on Tuesday 5 November.

Three great community events – thank you for all the positive feedback and your ongoing support. It is hugely appreciated. Of course, the planning has already begun for 2025. The fête will be held on the recreation ground on Saturday 12 July, and the bonfire and fireworks display will be on Wednesday 5 November. Put the dates in your calendars; we look forward to welcoming you to these events.

Keep an eye on our Facebook page for further information: www.facebook.com/profile.php?id=100076240337160 or scan the QR code.

We can be contacted by direct message via Facebook, or (preferably) by email at crichfete@gmail.com



By Kate Hazell

Change has been a well-used word this year! Changes at South Wingfield WI have included new faces on our committee, a new President, and new members Carol and Fiona.

However, unchanged is our mission to provide friendship and opportunities for women through the WI. Our 2025 programme will offer a variety of speakers and activities. Our coffee mornings and walks will continue, and crafts will replace time in the garden as winter takes hold. We also plan to visit John Smedley's Mill.

By the time you read this there may be a new WI group in the Crich area, following an exploratory meeting in October. We send our good wishes to any new WI group and members, and look forward to positive cooperation. If you are excited by the prospect of joining the WI, remember that you can be a member of more than one local group. You are not limited to the WI where you live!

We welcome visitors to our meetings on the first Tuesday of the month at 7.15pm at the Parish Rooms in South Wingfield. Christmas approaches, and we plan to party, enjoy an Xmas lunch at Santo's and enjoy the festivities while also helping those who have least.

Fritchley Community Association and Village Hall news

It has been a very busy year in Fritchley so far, and there's more to come for its generous residents who continue to support community events with their presence. Of course, the stalwarts of the Fritchley Community Association and volunteers who help make the magic happen have also been busy. Without your support, whether as a volunteer in a pinny, Bun the Baker, Chip the Carpenter, Block the Builder, Ron the Raffle, Sheila the Leader, Buster the Dogsboddy or that most important character, Vivian the Virtual Poster Person, the hall's income would be limited and the roof that protects both church and hall would leak.

A special mention has to go to Claire, who was the driving force behind a new venture for our small village – our village show. It proved to be well worth the risk. The entries were numerous and magnificent, and the turnout was large and happy. The Victoria sponges rose to the occasion, and the auction at the end of the day was good fun – thank you, Tim, for your help in keeping us all under control. Fun rather than sobriety was the aim of the show, and if you didn't enjoy it it's probably because you weren't there. See you in 2025!

Still to come this year are more evenings of mediumship, a Race Night, a quiz, a Motown and Northern Soul Special and our annual Christmas Celebration. See the diary dates for more details and book your tickets in the usual way, or via our new electronic payment method.

Some events are targeted to raise much-needed funds to help maintain our community buildings, keep us all warm in winter and ensure our safety. Other, usually smaller events are solely community-based in that the aim is simply to bring us all together, to help us connect. I have lived in the village for over 20 years (a newbie!), but while I was working I met almost no-one on a daily basis, beyond a passing "hello". Since my retirement, having a Border Terrier to walk every day has changed some of that – but having the time to go beyond just saying "hello" helps, too.

With that in mind, we are organising 12 "Fritchley Café Connect" sessions (2 per month) to be held in the hall between October and March next year. The sessions will all involve a cuppa, cake and something else to connect us; currently we are planning a jewellery workshop, a Hallowe'en Trail, a blind date with a book, a Christmas crafts workshop, a Pudding Club, board games and bingo, a tabletop sale, an art gallery, a French-style café, beer tasting with a local brewer and World Book Day. Most sessions are entirely free, so come along to any you can, and let us know which work for you and what you would like to see more of in the future. Any way up – come and connect with those you live alongside.

Find the FCA on Facebook, or email us at Fritchleyvillagehall@gmail.com
Find event dates on page 27 in the Community Diary

Scouts 100 year milestone

The Scout group has been part of Crich community for 100 years, and will hopefully continue to be so for many years into the future. Many people in the area have been part of the group over the years – not only the people who share their time to run the group and the young people who have fun, make friends and grow as they move through the sections, but also the parents who donate cakes and flowers, make sure that kitbags are packed ready for camp, and transport their children to the different activities. We also include the community members who offer their time and skills to enhance our sessions; recently these have included Pete Hintridge and Lewis Macarthur who helped us get first aid badges, everyone at the fire station who showed us round the station and the fire engine, and Eddie Mann who talked to us about the police and showed the Beavers the uniform and a police car. We get our BBQ sausages from Crich Butchers, and our bread from Loaf – and Loaf and Crich Brew have also donated prizes to a Scout raffle. In addition, we mustn't forget all the people who queued up at the fête for burgers and hot dogs, all of whom helped to fund the group.

Being part of Crich community means that some of our activities link in with other events, such as well dressings, the fête, car parking for the visit of the Archbishop of Canterbury, Remembrance Sunday, and church Christmas card deliveries. Through all these activities the 1st Crich Scout group helps to make Crich a great place to live.



For the group's 100th year, we held a church service led by Di Fretwell and Annette Love. The service looked back at the similarities and differences of Scouting down the years, and each section renewed our promises. The service concluded with tea and cakes and a chance for Scouting members of all ages to rekindle friendships. As part of the weekend-long celebration the Old Black Swan and the Tramway Museum let us visit locations where 1st Crich met before the current Scout hut was built. The Stand also let us fly home-made kites and practice semaphore, which have been popular activities for Scouts over the years.

As the 1st Crich Scout group's centenary year is drawing to a close, we would like to say thank you to all the people who have joined together over our 100 years to support 1st Crich Scouts and make the group part of the community. This in turn has given our young people many opportunities to have new experiences and make new friends.

If you would like to join 1st Crich Scouts (leaders and young people), please contact the leaders
CrichBeaverLeader@gmail.com
(Beavers), williamcaine@btinternet.com
(Cubs), or scoutleader.crich@gmail.com
(Scouts).

Crich Junior School

A joyride through history: Year 5 and 6 visit Crich Tramway Village

Recently the Year 5 and 6 classes were invited to Crich Tramway Village for an exciting adventure. This special day marked a historic moment as our pupils became the very first passengers to ride the newly restored LCC1 tram named "Bluebird". As they climbed aboard the gleaming vehicle, the autumn sun reflected off its polished exterior.

As the tram began its journey the laughter of our children echoed through the air, creating a symphony of excitement. Mr Hand, with his wealth of knowledge and passion for tram history, was able to entertain the children, sharing fascinating tales and trivia about each stop along the way. The experience was not just a ride; it was a journey through time, where history came alive. We were privileged to be part of something truly special. Thank you to all at Crich Tramway Village for your hospitality.



Litter heroes: Crich community clean-up

A mixed group of twenty pupils embarked on a litter-picking adventure last week, focusing on key areas of our community. Armed with gloves and bin bags, they enthusiastically tackled the Glebe, the bungalows, the doctors' surgery and the local park. The young volunteers worked together, sharing stories and jokes while also making a difference. By the end of the session they had collected an impressive amount of rubbish, leaving our neighbourhood cleaner and brighter. Their efforts not only improved the environment, but also hopefully inspired others to take pride in their surroundings.



Self-portraits with a fruity twist

Giuseppe Archimboldo, the renowned Italian Renaissance painter, is celebrated for his imaginative portraits made entirely from arrays of objects. His unique style, which blends creativity with natural elements, inspired our Year 6 students to embark on a fascinating art project. Using pulses, fruits and vegetables, the children crafted self-portraits reminiscent of Archimboldo's stunning masterpieces.

As the students meticulously arranged their edible materials, they considered how each item could represent different features of their faces. A banana might become a nose, while vibrant strawberries formed cheerful eyes. The results were nothing short of astonishing! Each artwork showcased the students' individuality, transforming simple ingredients into expressive figures.

Once the portraits were completed, we captured them all as photographs that celebrated the children's extraordinary creativity. Importantly, nothing went to waste; after the photoshoot the leftover fruits and vegetables were happily devoured by our chickens. This project not only honed the children's artistic skills but also promoted sustainability, teaching the valuable lesson that creativity can be both fun and environmentally friendly.



Celebrating 140 years

This year Crich Junior School marks an incredible milestone: its 140th birthday! Throughout the academic year the school community will engage in a variety of exciting projects to commemorate this special occasion. Students will have the opportunity to collaborate with a talented poet, who will help them to create a school poem. Additionally, they are learning songs to perform alongside Emily from the Derbyshire Music Partnership, fostering their love for music and creativity. A flag design competition has also been held, allowing children to express their artistic flair. With so many activities planned, this year promises to be filled with joy and celebration. The school invites and encourages everyone to join in with our festivities; watch this space for more updates!



Do you have something to say?

Editions of Crich Standard typically contain a mix of reports from our many community groups, together with features on a wide range of topics that relate to people, events or activities within the community.

We are genuinely thrilled with all the content we receive each quarter, and we cannot thank our contributors enough for giving up their time to write the pieces. In return, we hope that community groups benefit from sharing their activities, and that most of our readers gain some enjoyment from what we print.

However, this is not a “closed shop”, so even if you’ve never written anything for the Standard (or for any other publication, for that matter) but would like to have a go, we would be delighted to hear from you. We are particularly interested in two sorts of contribution.

First, do you have thoughts you’d like to share about something in the Parish? In the last edition we had a piece imagining the repurposing of the Market Place in Crich. Not a new idea, but one that had been neglected for some time – and you know what, many people feel the same way.

If you think something could be changed or fixed for the better, the chances are very good that there will be others who agree. Write a measured and objective piece for the magazine, and find out whether there’s an appetite to change something, move forward, or think differently.

Second, do you have a hidden talent for writing short-form fiction? Is there a short story you know you want to write? As long as it really is short (400–800 words), from time to time we’d be delighted to print the best contributions in the magazine. And who knows where that might lead?

Either of these options would be valuable additions to broaden our reach, but the usual caveats apply. This is not “letters to the editor” by another name; political, promotional, rude, offensive or potentially defamatory pieces won’t make the cut. Honest, fair, thought-through arguments and great ideas will.

If you have something to say but don’t want to write a piece yourself, you could send us an outline, and if we think it’s suitable for publication we’ll find someone to talk with you and write the article collaboratively with you.

Drop us a line at editor@crichstandard.org and begin your journey to publication.

Finally, may I wish you a Merry Christmas and a Happy New Year from myself and the Crich Standard committee!

Tony
Tony Mills, Chair

Having spent some time recently travelling within the vastness of Canada, trees and leaves became a familiar sight and topic of discussion. The quiz below celebrates these wonderful parts of nature.



Compiled by Roger Bode

1. Which leaf features on the flag of Canada?

2. What dubious honour does the manchineel tree hold?

a) the rarest

b) the most poisonous

c) it's leafless

d) the smallest

3. Which drug originates from willow bark?

4. Which type of tree is the tallest in the world?

5. Which leaf is the symbol of the National Trust?

a) sycamore

b) tea

c) holly

d) oak

6. Which tree is on the flag of Lebanon?

7. Which famous UK tree featured in the 1991 film Robin Hood: Prince of Thieves?

8. The Fortingall Tree in Perthshire, reputedly the oldest in the UK, is what type of tree?

- Answers
1. Maple
2. b
3. Aspin
4. A sequoia tree called Hyperion in California, 116 metres tall
5. d
6. Cedar
7. The Sycamore Gap tree
8. A yew; Forestry and Land Scotland considers it to be around 5,000 years old